



Who's Who?

Local Leadership

The **Advisory Board** comprises public & private community leaders and includes both ULI members and non-members. The Board provides insight into critical issues, hot topics and market trends to help the district council set strategic direction and program priorities. Board members are appointed by the district council Chair, upon recommendation by the Governance Committee.

The **Governance Committee** consists of former district council Chairs and ULI Trustees. It's purpose is to provide guidance and leadership in compliance with ULI policies, practices, and code of ethics. The Governance Committee is responsible for succession planning and making recommendations for future district council Chairs, Treasurer and Chair for Mission Advancement.

ULI Kansas City is led by a volunteer **Management Committee** that guides the district council, leads operations, delivers local programming and content, and manages financial obligations and goals. Management committee members are appointed by the district council Chair and serve two-year renewable terms of service, commencing with ULI's fiscal year.

2015 Management Committee

Lynn Carlton | District Council Chair
HOK

Daniel F. Musser | Governance Committee Chair
Newmark Grubb Zimmer

Diane Burnette | Chair of Mission Advancement
Main Street Corridor Development Corp./Main Street CID

Russ Pearson | Young Leaders Group Chair
Lee & Associates

Chris Cline | Membership Committee Chair
Confluence

Julia Taylor | Programs Committee Chair
VanTrust Real Estate

Robert Langenkamp | Immediate Past Chair
KC Economic Development Corporation (KCEDC)

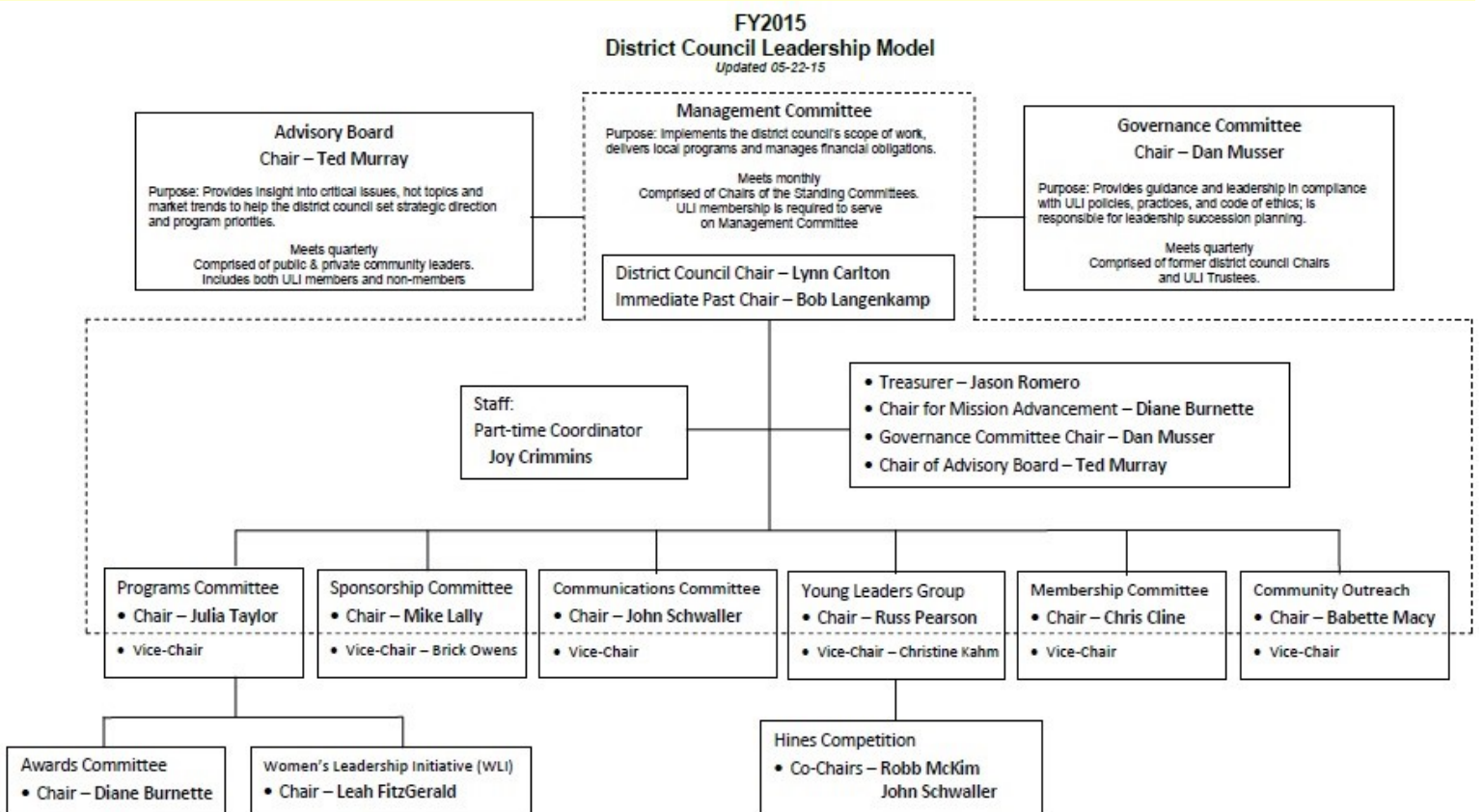
Ted Murray | Advisory Board Chair
Colliers | Kansas City

Jason Romero | Treasurer
Husch Blackwell LLP

Babette Macy | Community Outreach Chair
Kansas City Missouri Planning Commission

John T. Schwaller | Communications Chair
CRB Consulting Engineers

Michael Lally | Sponsorship Committee Chair
Olsson Associates



How do I get involved?

ULI Kansas City is a member-driven organization that offers numerous volunteer opportunities. Getting involved is a great way to meet other members, develop leadership skills, and have a meaningful impact upon Kansas City's land use community. Whether you wish to be involved at the local, national or global level, ULI has just the right opportunity for you.



Committees are the backbone to ULI Kansas City's local body of work. Committees provide members an opportunity to engage with other members to help carry out the interests and initiatives of the district council.

How much time is required?

Committee meetings are typically held monthly or bi-monthly (and in some cases just quarterly), first thing in the morning or late in the afternoon, and last 60-90 minutes. Depending upon committee priorities, the work effort to support committee initiatives ranges between 2-4 hours each month. The professional and personal payback is priceless!

AWARDS COMMITTEE | Diane Burnette DBURNETTE@MAINCOR.ORG

The Awards Committee plans the annual *Developments of Distinction Awards Ceremony & Reception* to recognize and celebrate land-use projects that exemplify exceptional achievement of best practices in development.

COMMUNICATIONS COMMITTEE | John Schwaller JOHN.SCHWALLER@CRBUSA.COM

The Communications Committee is responsible for promoting and communicating information about ULI Kansas city with external audiences through channels such as social media, website, event invitations, e-newsletters and event summaries.

COMMUNITY OUTREACH (TAPs) COMMITTEE | Babette Macy BMACY@KISSICKCO.COM

The Community Outreach Committee leverages opportunities for ULI Kansas City to have an impact upon local community building and land use issues. Technical Assistance Panels (TAPs) provide strategic advice to sponsors on complex land use and real estate development issues. The TAPs program links local public agencies and nonprofit organizations to the expert knowledge and experience of our ULI members.

MEMBERSHIP COMMITTEE | Chris Cline CCLINE@THINKCONFLUENCE.COM

The Membership Committee develops recruitment and retention strategies to help grow and maintain membership in ULI Kansas City. Committee members extend a personal welcome to new members and follow up with non-member leads to explain membership benefits.

PROGRAMS COMMITTEE | Julia Taylor JULIA.TAYLOR@VANTRUSTRE.COM

The Programs Committee helps plan monthly educational and informational meetings such as our popular *Breakfast with Leaders* series, trends conferences, and networking events.

SPONSORSHIP COMMITTEE | Mike Lally MLALLY@OLSSONASSOCIATES.COM

The Sponsorship Committee solicits financial support from area businesses and friends of ULI.

YOUNG LEADERS GROUP | Russ Pearson RPEARSON@LEE-ASSOCIATES.COM

The Young Leaders Group creates opportunities for young professionals under the age of 35 to develop skills and build relationships that will help advance their careers and foster an understanding of thoughtful development practices. Our seasoned members support and encourage the next generation of land use leaders by providing mentorship and insight into their career trajectory.

We welcome fresh ideas and perspectives. Don't see anything that feels like a right fit?

If you prefer to tell us how you'd like to become involved, contact 816.746-4875 or kansascity@uli.org.